

(KNYSNA ALLOTMENT AREA)
GENERAL PLAN No. 1730/2001

CDR

SG No 1730/2001

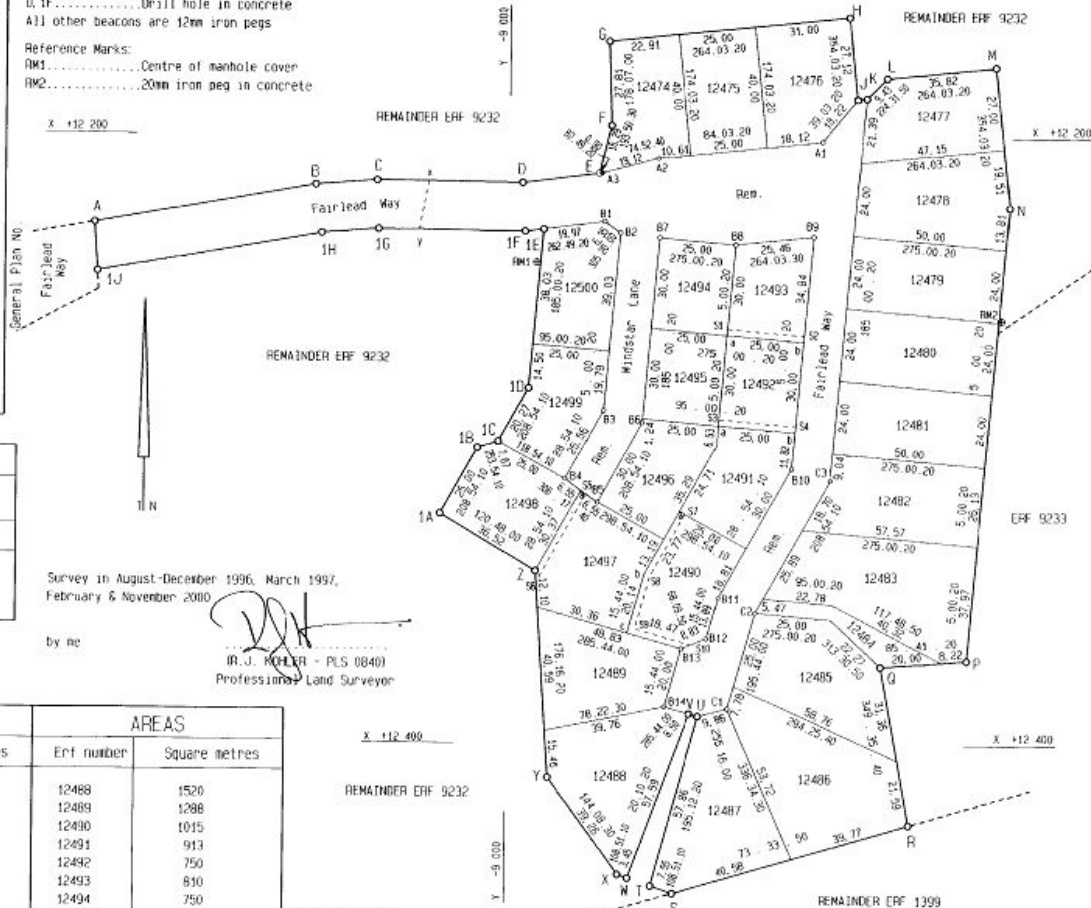
MAIN FIGURE			
DATA		CO-ORDINATES	
Sides	metres	Angles of Direction	System: M.G. 23 Y metres X Constants +0,00+3 760 000,00
AB	73,35	259,56,30	A -8 864,42 +12 229,35
BC	20,11	265,17,00	B -8 936,64 +12 216,54
CD	47,85	270,37,30	C -8 956,68 +12 214,89
DE	25,11	262,49,20	D -9 004,33 +12 215,40
EF	16,29	193,50,30	E -9 029,24 +12 212,27
FG	27,81	178,07,00	F -9 033,14 +12 196,45
GH	78,91	264,03,10	G -9 032,22 +12 168,65
HJ	27,12	354,03,10	H -9 110,71 +12 160,48
JK	3,00	264,03,10	J -9 113,52 +12 187,45
KL	9,43	224,31,50	K -9 116,50 +12 187,14
LN	35,82	264,03,20	L -9 123,11 +12 180,42
MN	46,51	354,03,20	M -9 158,74 +12 176,71
NP	149,91	5,00,20	N -9 163,55 +12 222,96
PQ	28,22	85,41,20	P -9 150,48 +12 372,30
QR	52,95	349,35,40	Q -9 122,33 +12 374,42
RS	80,35	73,33,50	R -9 131,90 +12 426,50
ST	7,55	108,51,10	S -9 054,82 +12 449,23
TU	57,86	135,12,20	T -9 047,68 +12 446,79
UV	3,00	105,44,00	U -9 062,85 +12 390,96
VM	57,59	20,10,20	V -9 059,97 +12 390,15
WX	3,45	108,51,10	W -9 040,11 +12 444,21
XY	39,26	144,08,30	X -9 036,84 +12 443,09
YZ	68,15	176,16,20	Y -9 013,85 +12 411,28
Z1A	36,52	120,48,00	Z -9 009,42 +12 343,27
1A1B	25,00	208,54,10	1A -8 978,05 +12 324,57
1B1C	7,07	253,54,10	1B -8 930,13 +12 302,69
1C1D	20,27	208,54,10	1C -8 936,92 +12 300,73
1D1E	52,53	185,00,20	1D -9 016,72 +12 282,98
1E1F	6,10	82,49,20	1E -9 011,30 +12 230,65
1F1G	48,00	90,37,30	1F -9 005,25 +12 231,42
1G1H	18,61	85,17,00	1G -8 957,25 +12 230,89
1H1J	74,42	79,56,30	1H -8 938,70 +12 232,42
1J1A	16,10	176,25,20	1J -8 865,42 +12 245,42

OF SUBDIVISIONS OF
ERF 12473 KNYSNA

Vide Diagram No. 1729/2001; Deed of Transfer No.
Comprising 27 erven numbered 12474 to 12500, and the streets
situate in the MUNICIPALITY & ADMINISTRATIVE DISTRICT OF KNYSNA
PROVINCE OF THE WESTERN CAPE

SCALE 1: 1000

DESCRIPTION OF BEACONS
P, Q, R.....15mm iron peg
D, I, F.....Drill hole in concrete
All other beacons are 12mm iron pegs
Reference Marks:
RM1.....Centre of manhole cover
RM2.....20mm iron peg in concrete



Survey in August-December 1996, March 1997,
February & November 2000

by me

IR. J. KOHLER - PLS 0840
Professional Land Surveyor

Servitude Notes:

- The line 12492a 12492b represents the southern boundary of a 2m pipeline servitude over Erf 12493, as shown.
- The line 12491a 12491b represents the southern boundary of a 2m pipeline servitude over Erf 12492, as shown.
- The line 12490a 12497b 12497c B13 represents the northwestern and southwestern boundary of a 2m pipeline servitude over Erf 12490, as shown.
- The line 12497a Z represents the northwestern boundary of a 2m pipeline servitude over Erf 12497, as shown.

FILE No. S/4587/31 (VOL. 3)
S. R. No. 678/2001
COMP: AM-1AC (3601)

CO-ORDINATES			CO-ORDINATES		
System: M.G. 23 Y metres X Constants +0,00+3 760 000,00			System: M.G. 23 Y metres X Constants +0,00+3 760 000,00		
BLOCK CORNERS			TRIGONOMETRICAL BEACONS		
A1	-9 102,03	+12 201,60	(100) K40 Δ	-7 703,41	+12 157,32
A2	-9 048,59	+12 207,17	(100) RES Δ	-8 671,04	+9 052,15
A3	-9 030,13	+12 212,15			
B 1	-9 031,12	+12 228,16			
B 2	-9 036,30	+12 231,83			
B 3	-9 031,16	+12 290,43			
B 4	-9 018,81	+12 312,81			
B 5	-9 029,38	+12 320,57			
B 6	-9 043,87	+12 294,30			
B 7	-9 049,22	+12 233,38			
B 8	-9 074,12	+12 236,48			
B 9	-9 099,45	+12 232,84			
B10	-9 092,76	+12 309,21			
B11	-9 069,17	+12 351,93			
B12	-9 065,41	+12 365,31			
B13	-9 057,21	+12 368,59			
B14	-9 351,76	+12 387,84			
C1	-9 172,39	+12 388,45			
C2	-9 381,28	+12 356,90			
C3	-9 105,47	+12 313,08			
REFERENCE MARKS					
RM1 ⊕	-9 009,12	+12 241,64			
RM2 ⊕	-9 161,07	+12 260,21			

AREAS		AREAS	
Erf number	Square metres	Erf number	Square metres
12474	1025	12488	1520
12475	1000	12489	1286
12476	1157	12490	1015
12477	1184	12491	913
12478	1405	12492	750
12479	1200	12493	810
12480	1200	12494	750
12481	1200	12495	750
12482	1371	12496	913
12483	1898	12497	1195
12484	377	12498	1102
12485	1463	12499	1002
12486	1844	12500	1006
12487	1568		