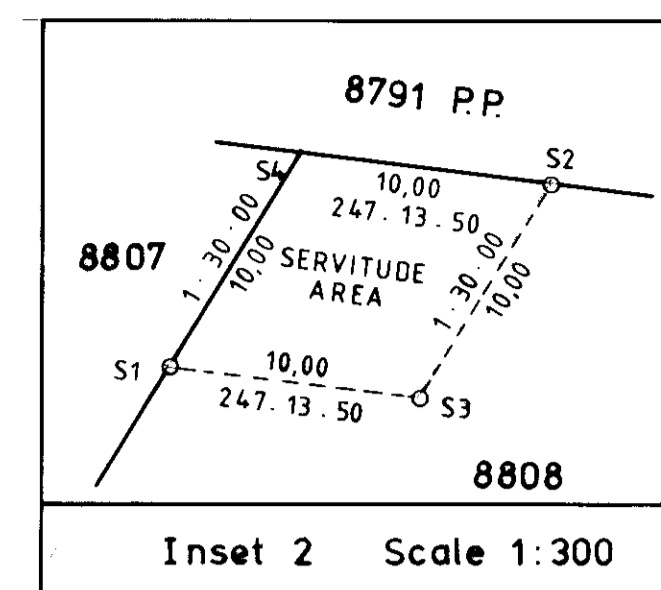


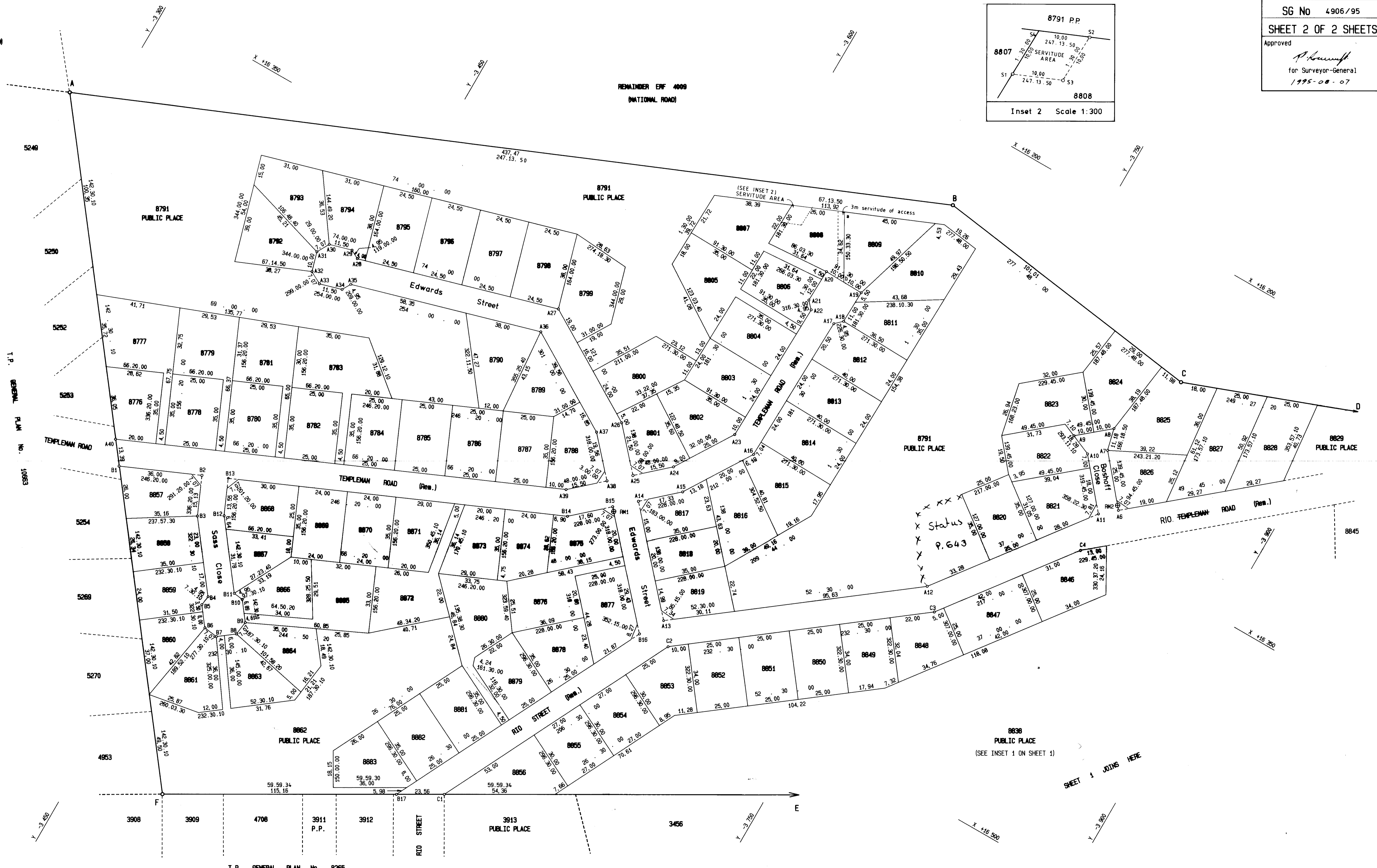
4906/95 SHT 2

5147 NATIONAL ROAD

REMAINDER ENF 4009 NATIONAL ROAD



SG No 4906/95
 SHEET 2 OF 2 SHEETS
 Approved
P. Pawson
 for Surveyor-General
 1995-08-07



T.P. GENERAL PLAN No. 10883

T.P. GENERAL PLAN No. 8265

Surveyed in February, April and May 1995
J.R. Pawson
 by me Professional Land Surveyor
 (J.R. PAWSON - PLS 0476)

NOTE:
 All splay distances are 5.00 metres.

(KNYSNA ALLOTMENT AREA)
 GENERAL PLAN No. 4906/1995

OF SUBDIVISIONS OF
 ERF 8726 KNYSNA
 Situate in EASTFORD TOWNSHIP EXTENSION No. 1
 MUNICIPALITY AND ADMINISTRATIVE DISTRICT OF KNYSNA
 PROVINCE OF THE CAPE OF GOOD HOPE



SCALE 1:750

FILE No. S/4587/21/33
 S.R. No. E1580/95
 COMP: AMNA-1331 (M3322)
 AMNA-1332 (M3323)
 AMNA-1333 (M3324)

C

S