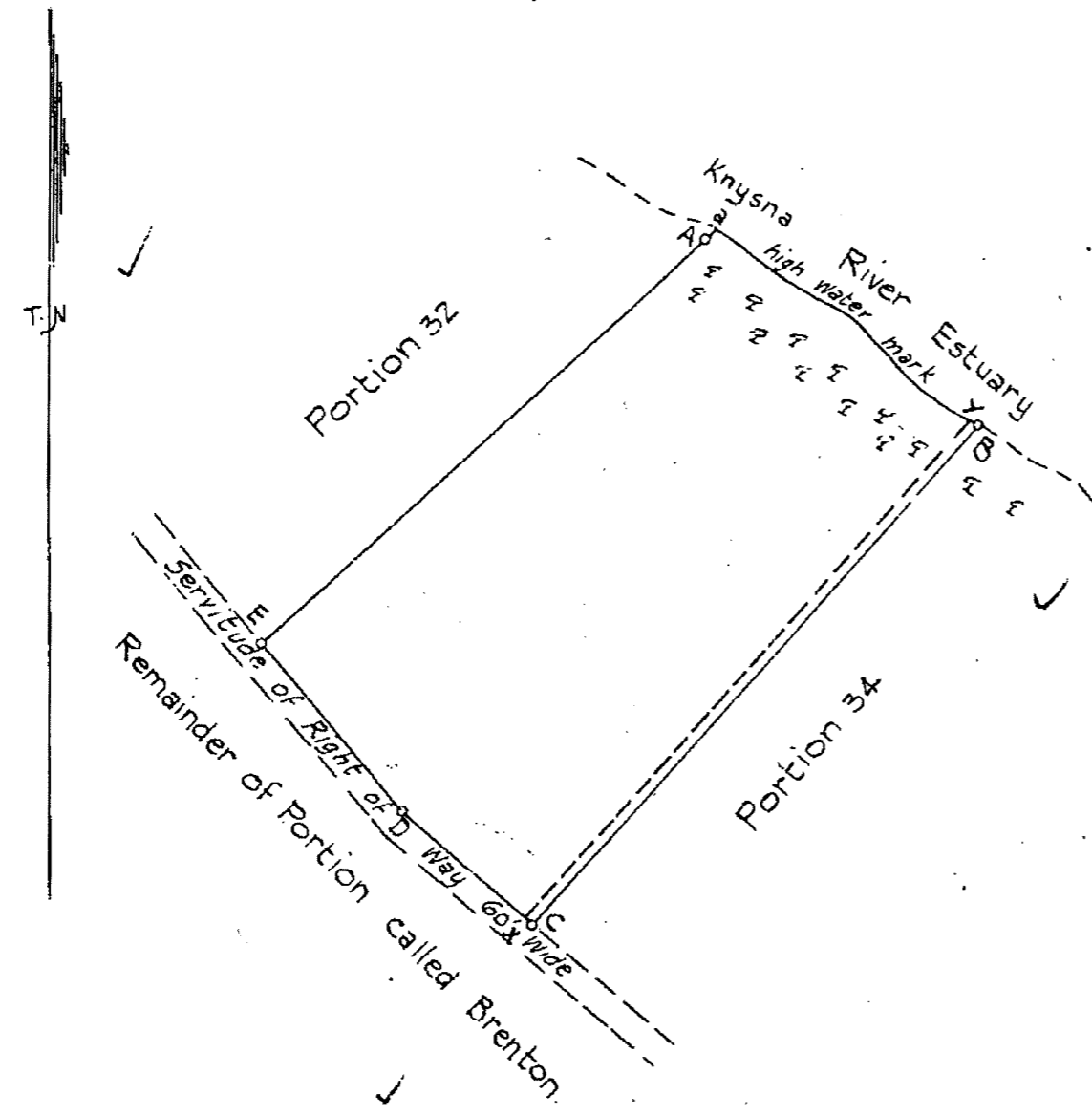


DESCRIPTION OF BEACONS.  
 A B C D E..... 3x1/2" round iron pegs and cairns

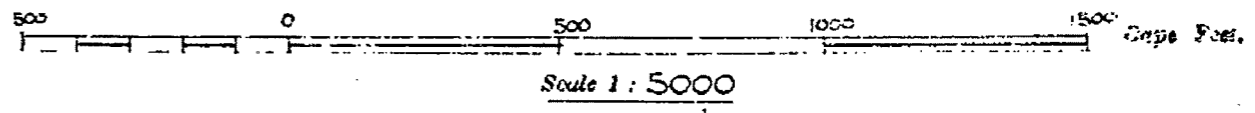
Cape	Z. Co.	Uitziagt	Constant	
			±	±
AB	647.00	304.27.30	A - 13036.21	+ 75643.65
BC	1320.03	41.22.20	B - 13570.22	+ 76008.94
CD	340.00	13.22.20	C - 12697.75	+ 76999.53
DE	429.55	140.33.50	D - 12442.60	+ 76774.81
EA	1178.15	227.18.10	E - 12170.33	+ 76442.58
Aa	28.00	227.18.10	River Connection	

Approved  
*Esmund Edmund*  
 Surveyor-General.

11 JAN 1950



Gedeelte 101 (.....)  
 ('n gedeelte van Gedeelte 53.....) van die plaas  
 Uitzigt ..... Nr. 216  
 KNYSNA



The figure a high water mark along Knysna River Estuary B.C.D.E  
 represents 10.3814 Morgen of land being  
Portion 33 of the farm

**BELVIDERE**

situate in the Division of Knysna Province of Cape of Good Hope.

Surveyed in December 1948 by me

*Alfred Swaud*  
 Land Surveyor.

This diagram is annexed to D.T. No. 15693. dd. 18/10/50.	The original diagram is No. 2391/49 annexed to	File No. <u>5764/2</u> S.R. No. E. <u>6711/49</u> General No. <u>77 725<sup>LD</sup></u>
--	---	--