



van Waart Pawson & Maree

SIDES metres	ANGLES OF DIRECTION	CO-ORDINATES	
		Y System: Lo23°	X
		Constants	+0, 00 +3760 000, 00
A B	288.29.50	A	+17 611, 30 +7 230, 85
B C	18.32.20	B	+17 588, 90 +7 238, 34
C D	108.35.00	C	+17 610, 90 +7 303, 94
D A	198.32.10	D	+17 633, 28 +7 296, 42
(220) Knys 23 			+21 524, 26 +6 454, 38
(449) Blombos 			+17 295, 28 +15 984, 76
<b>BEACON DESCRIPTIONS</b>			
A ..... Iron standard			
B, C, D .. 12mm x 1500mm iron peg			

SG No.

5438-93

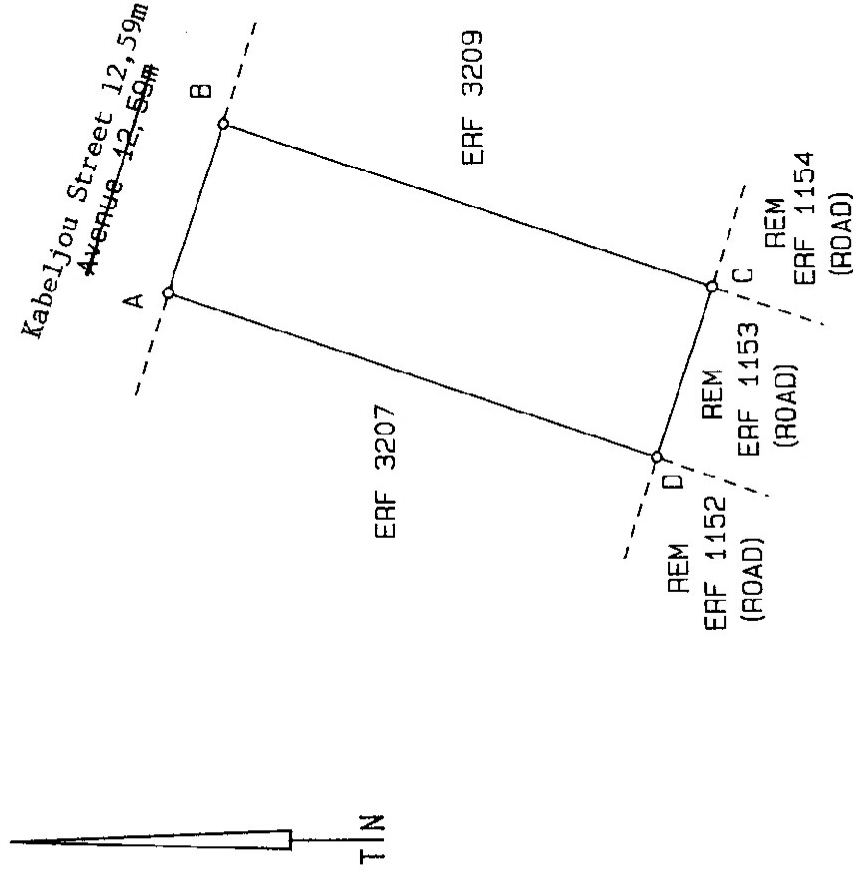
Approved

*R.A.T.M.*

for

SURVEYOR-  
GENERAL

1993.08.12



SCALE 1:1000

The figure A B C D represents 1633 square metres of land being ERF 3208 (portion of Erf 1153) SEDGEFIELD situate in the Municipality of Sedgefield Administrative District of KNYSNA Province of the Cape of Good Hope.

Surveyed in July 1991 - January 1992

by me April - June 1993

(R. J. KOTHEER) LAND SURVEYOR

This diagram is annexed to

No. **T 6395/2001**

d.d.

i. f. o.

The original diagram is

No. 13316/54

Transfer. 9881/55

Grant

C.C.T.

File S/6853/1

S.R. No. **E1844/93**

T.P.Gen. Plan S.104 (2070)

Comp. AL-2BA/X33 (695)