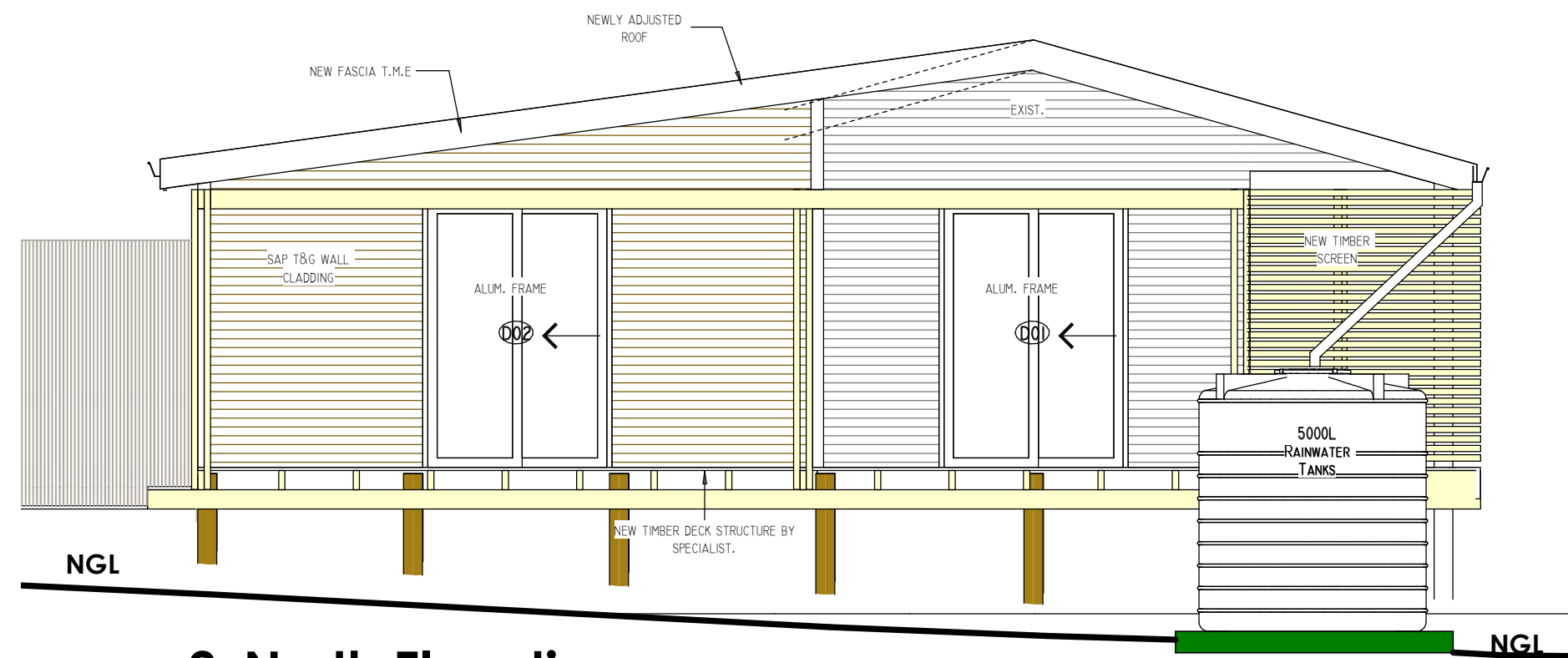
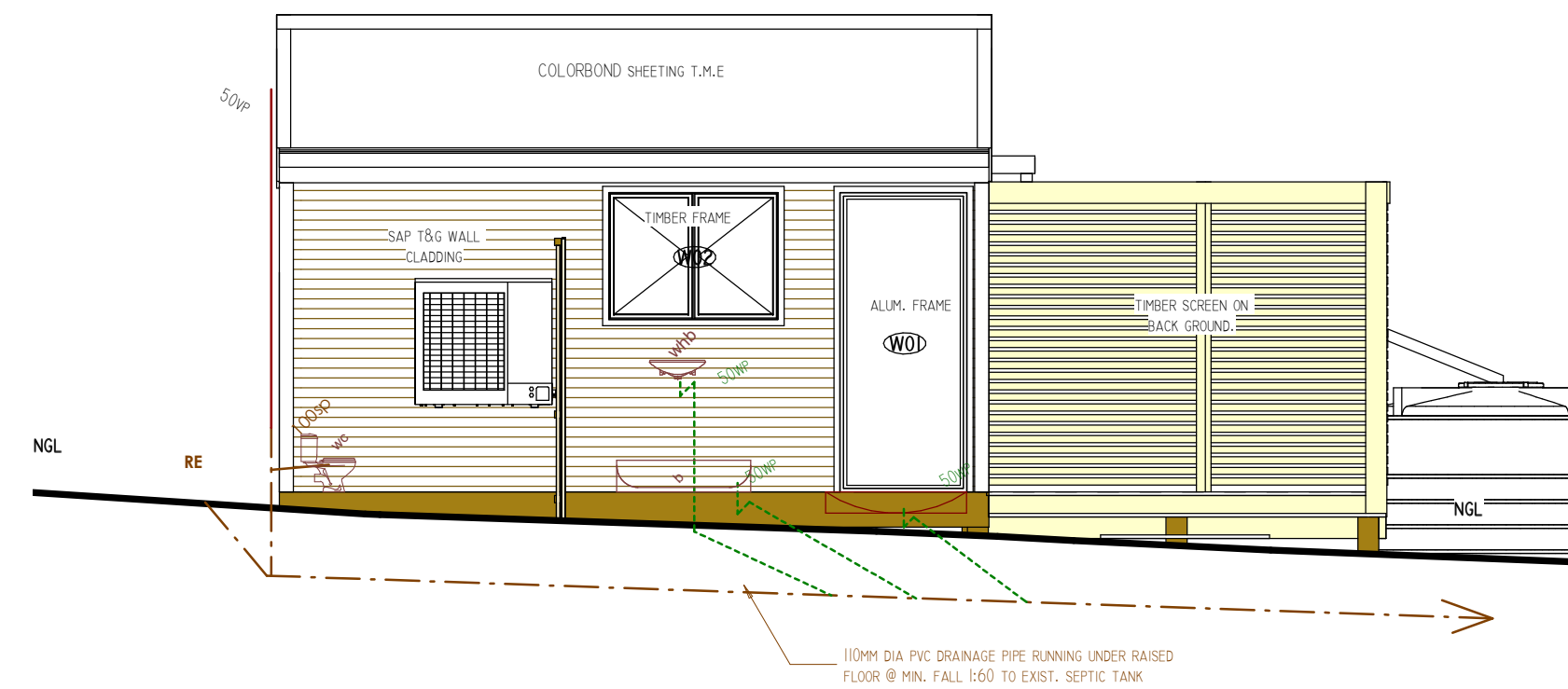


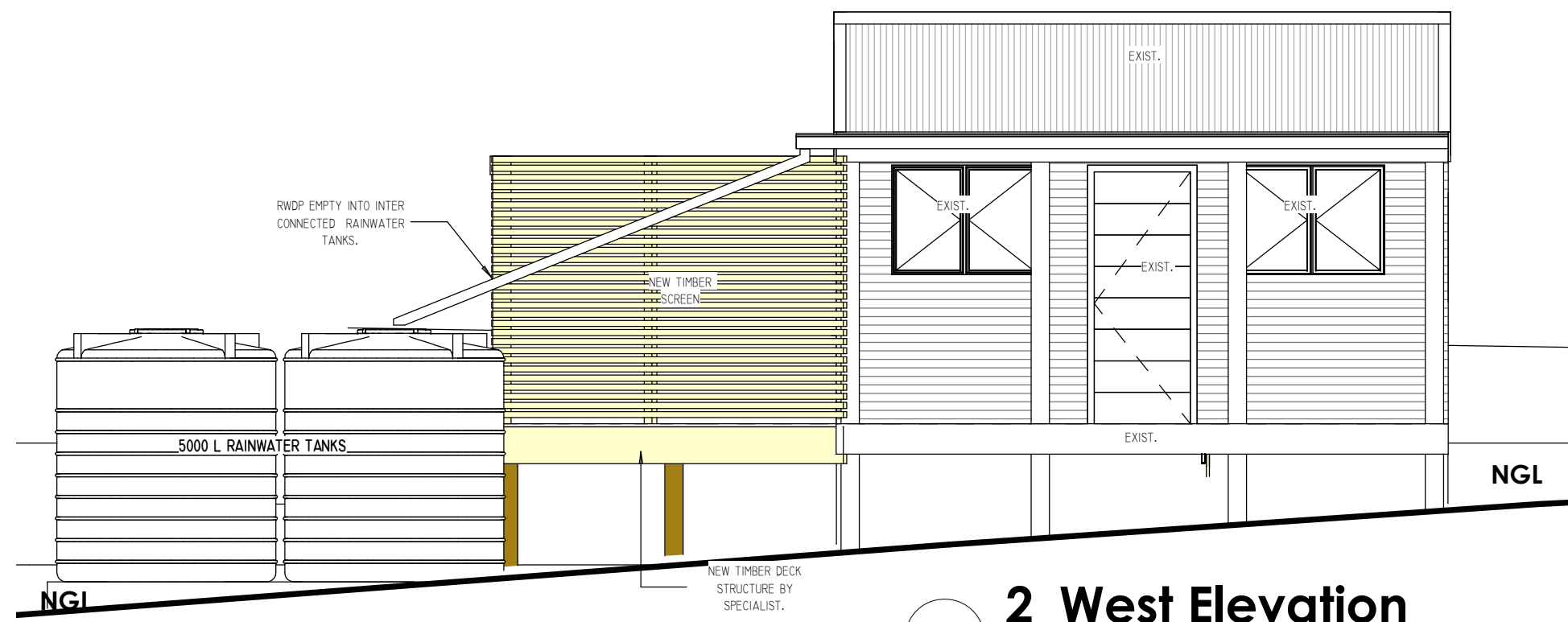
8 **2_Section Thru Gym Bathroom**
1 : 50



9 **2_North Elevation**
1 : 50



10 **2_East Elevation**
1 : 50



12 **2_West Elevation**
1 : 50



11 **2_South Elevation**
1 : 50

NOTE: ROOF CONSTRUCTION

Roof structure to Eng. spec. COLORBOND sheeting, Sialation 405 over purlins, with 120mm Isotherm insulation on Gypsum ceiling, Roof System to achieve Min. R-Value of 3.934m².K/W.

NOTE: SUSPENDED FLOOR CONSTRUCTION

Suspended timber floor, in accordance with SANS 10400-J, and Eng. Spec's, 135mm Aerolite Fibreglass insulation specified in cavity, in accordance with SANS204:2011 part 4.3.2.3(b)- to achieve a min. System R-Value of 3.888m².K/W.

NOTE: GLAZING

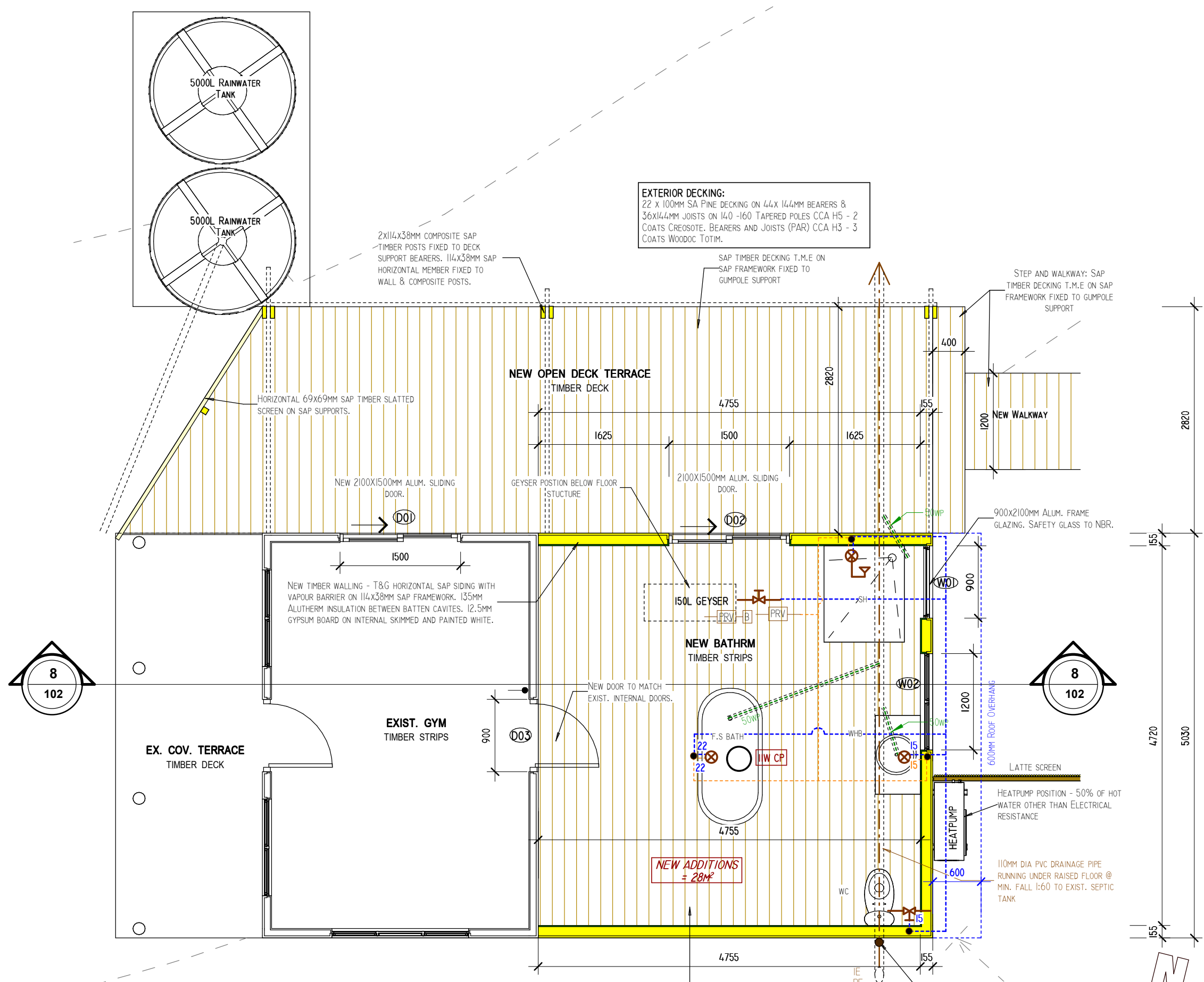
Glazing to be Single Low E Comply with SANS10400-H

NOTE: WALL CONSTRUCTION

External walls Comply with Deemed- To-Satisfy Regulations of SANS10400-XA as the construction is 135mm T&G Timber Framewall with 135mm Aerolite Fibreglass insulation in cavity to manufacturer spec, Gypsum Board Skimmed & Painted internally to achieve a System R-Value of 3.934m².K/W.

NOTE: HOT WATER SUPPLY

Kitchen and Bathrooms
Hot water supply to be by means of HEAT PUMP with Co-efficient of Performance (COP) of 2.5 at 50°C, Total Population of 6 persons at consumption of 115l per person per day. The Water Heater systems to comply with SANS1307, SANS10106 and SANS10251-1



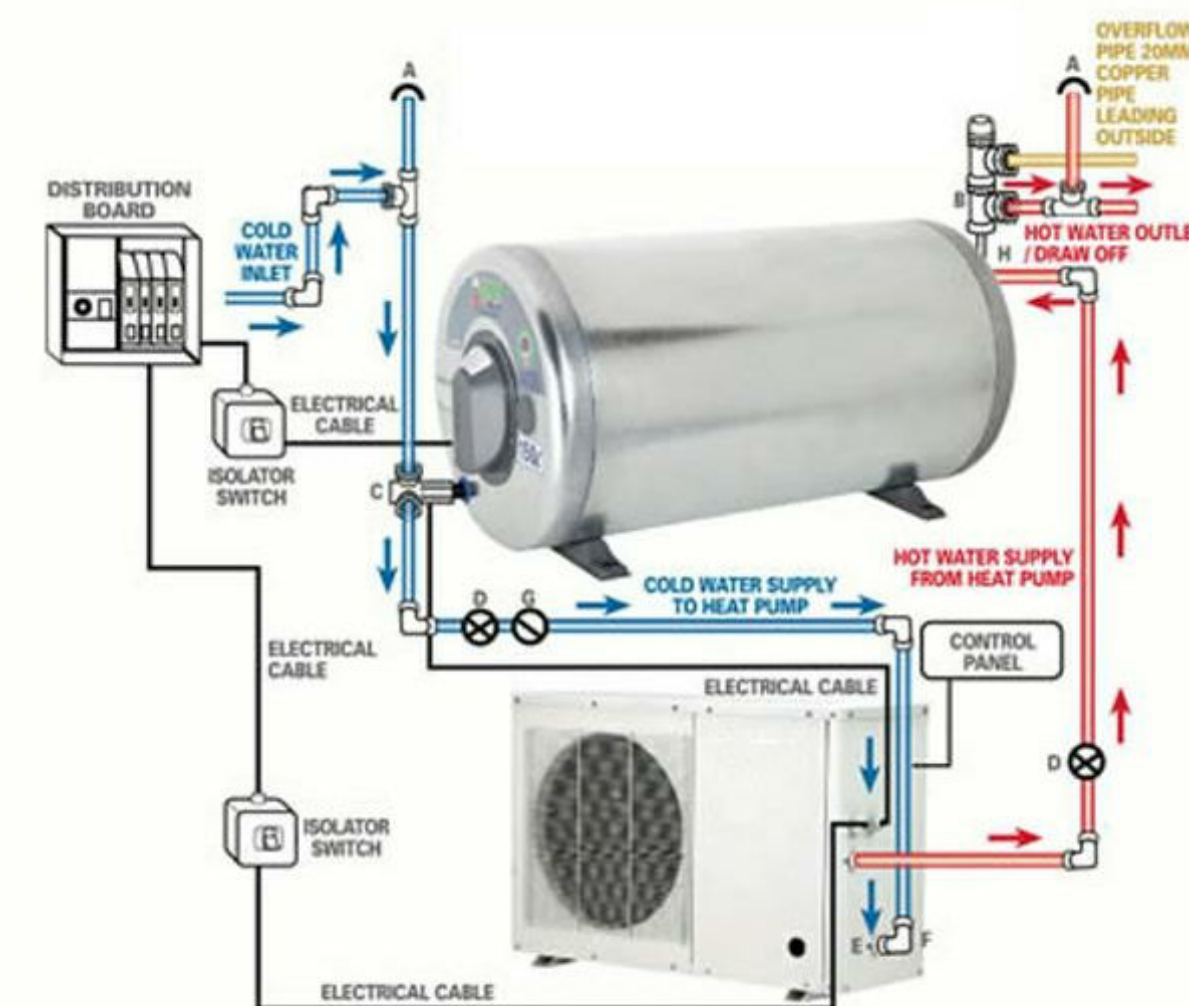
7 **2_Floor Plan_Gym**
1 : 50

WATER RETICULATION LEGEND

- Cold Water Supply
- Hot Water Supply
- ⚡ Shower Fixed
- ⛔ Stop Cock
- ⊗ Mixer

ELECTRICAL LEGEND

- ⚡ Recess Downlight Fitting (Low Voltage/LED)
- Ceiling Mounted Light fitting
- Wall Mounted Light fitting
- ⚡ 15 amp double plug @ 300mm off.
- ⚡ 15 amp double plug @ 1100mm off.
- ⚡ Stove connection
- Light Switch



WINDOW/DOOR NUMBER	W1	W2	D1, D2
DESCRIPTION	EXTRUDED ALUMINIUM	HARDWOOD TIMBER FRAME WINDOW T&G	UPVC FRAME
FIXED FRAME	EXTRUDED ALUMINIUM DOUBLE SLUNG WITH FIXED BOTTOM AND CENTER	HARDWOOD TIMBER FRAME WINDOW DOUBLE SLUNG	UPVC FRAME SINGLE SLUNG DOOR
IRONMONGERY	SUPPLIED WITH COMPLETE WINDOW	HEAVY DUTY STAINLESS STEEL	SUPPLIED WITH COMPLETE DOOR
GLAZING	SINGLE LOW E - Comply with SANS10400-N	SINGLE LOW E - Comply with SANS10400-N	SINGLE LOW E - Comply with SANS10400-N
FINISH	POWDERCOATED COLOUR - WHITE	NATURAL TIMBER	UPVC - WHITE
NUMBER REQUIRED	1	1	2

Occupancy - H3
Occupancy Times - 24 hrs per day
Building Nett area - 28m²
Building Total area - 28m²
Climatic Zone - Zone 4

Main Axis Building Orientation - North

Concrete slab on ground

See floor Construction Note

External Wall construction

See wall construction Note

Fenestration Calculations

Nett floor area - 28.00m²
Fenestration area to floor - 7.46m²
Fenestration percentage - 26.6%

Max Conduction allow - 39.20

Max Solar Heat Gain - 3.64

Achieved Aggregate Conduction / Solar Heat Gain

Calculated Conduction - 37.72

Calculated Solar Heat Gain - 2.52

Conduction / Solar Heat Gain Available

Calculated Conduction - 1.48

Calculated Solar Heat Gain - 1.13

Roof construction

Minimum Total R-value required: 3.7m².K/W

Basic roof assembly - Metal sheeting

- Ventilated

- Pitch 7.5° degrees with 6.5mm Gypsum Sloped ceiling.

Roof covering - 0.30 m².K/W

Ceiling - 0.06 m².K/W

Required insulation - 3.35 m².K/W

Sialation 405 Reflective Foil Laminate used under roof sheeting - 1.26 R-value

120mm ISO THERM used between Rafters above ceiling - 2.3 R-value

TOTAL R VALUE- 3.56

COMPLIES TO SANS204 REQUIREMENTS.

Air filtration & Leakage

Max permissible openable glazing - 2.0 L/sm²

Max permissible fixed glazing - 0.31 L/sm²

Max permissible doors - 5.0 L/sm²

External doors - Habitable Room - Door seal required

Roof, walls and floor to be constructed to minimise air leakage in conditional space

Services

Lighting and power

Max. energy demand - 140W

Max. energy consumption per Annum - 140kWh

Total lamp energy demand - 11W

Total energy demand - 0.39W/m²

Total energy consumption - Lights - 24.02kWh or 0.86kWh/m²

Available annual energy consumption - Lights - 115.98kWh

Hot water service

Type of accommodation - Sports Pavilion-Gym, low rental: 30-40L/capita/day

Assumed Hot water consumption - 30L

No. of persons per day - 6

Assumed daily Hot water consumption - 180L

Assumed Annual Hot water consumption - 65.52kL

50% of Annual Hot Water consumption - 32.72kL

(minimum volume of hot water provided by means other than electrical resistance heating - 90L

AREA SCHEDULE

ERF AREA - 40.4358 HA

NEWLY ADDED AREAS

INTERNAL AREA = 28m²

OPEN DECK TERRACE = 27m²

TOTAL NEW AREA = 42m²

TOTAL NEW COVERAGE = 51m²

PROJECT NAME

**PROPOSED NEW ADDITIONS
FOR TENIQUA TRUST ON
PORTION 70 OF 203
ELANDSKRAAL, SEDGEFIELD**

DRAWING TITLE

NEW ADDITION TO EXIST. GYM

DRAWING NO. **102**

REV. NO.

DATE **08/16/18**

SCALE **As indicated**

CLIENT

TENIQUA TRUST

SIGNATURE

Dale Faba

Prof. Architectural Technologist

SIGNATURE

DAVID N. GORINKEL (PLS0974)

AFRICA SURVEY

+27 82 4559802 • dave@aficasurvey.com

DESIGNER

Dale Faba

Prof. Architectural Technologist

DALE FABA

SACAP NO. PAT 24740250

32713 (SAIAT)

195 Swarthout Crescent,
New Horizon,
Plettenberg Bay

Contact no. 076 946 8358
Email: dalef@live.co.za

N.DIP(NMMU), N.CERT. (PE COLLEGES)

Architecture

Client Ref: Workshop

F:\AS BUILT_Tiniqua Trust.rvt

2019/04/09 20:08:34